A close-up photograph of a person's hand pointing at architectural blueprints on a desk. Another hand is holding a pen over the blueprints. A laptop is visible in the background, and the scene is lit with warm, golden light. A semi-transparent green box is overlaid on the left side of the image, containing white text.

Johnson County Central Public Schools Business Office For Sale

Mobil Site Management
Office

Multi Use for Multi- Organizations



SUPERINTENDENT
CONSULTATION SPACE



ARCHITECT/DESIGN
CONSULTANT SPACE



TEAM CONSULTATION
AND CONFERENCING
SPACE

Front Entrance
Leading to the
Central Office
of JCC



All Electrical
Hook-ups Fully
Functional.
Fifty-Eight Ft.
Length
Twenty-Two
Ft. Width



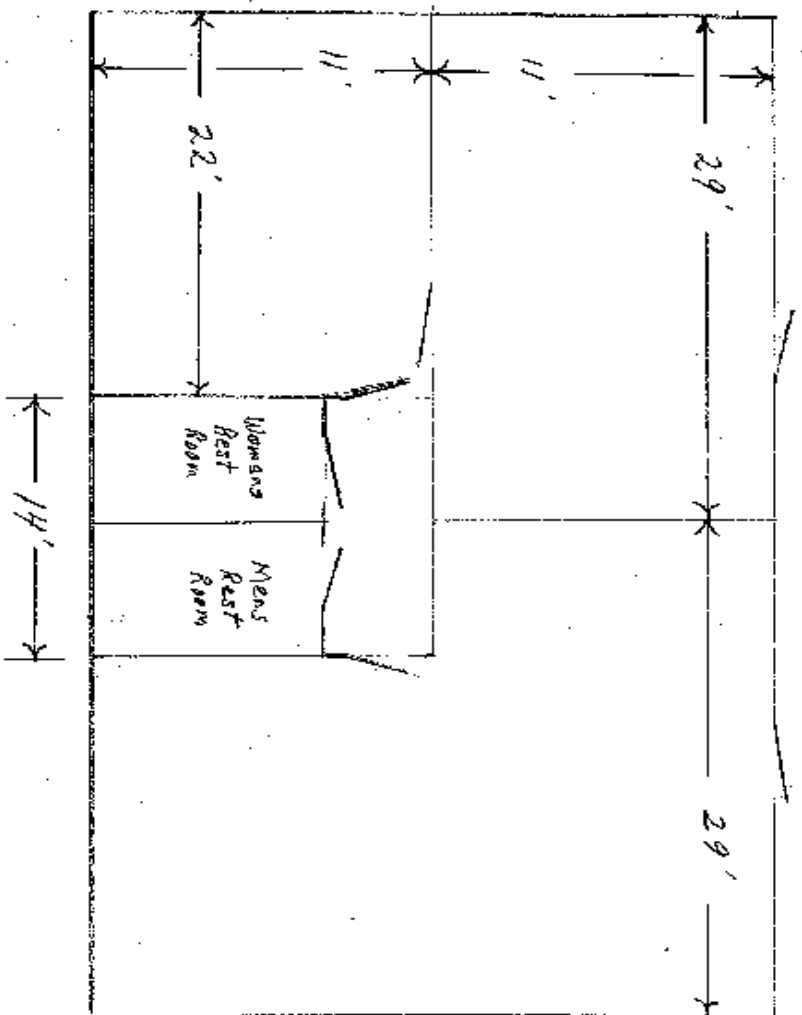
Two Windows for Classroom Space



Handicap
Accessible
Ramp for
Entrance to
Central Office
and Classroom



Floorplan



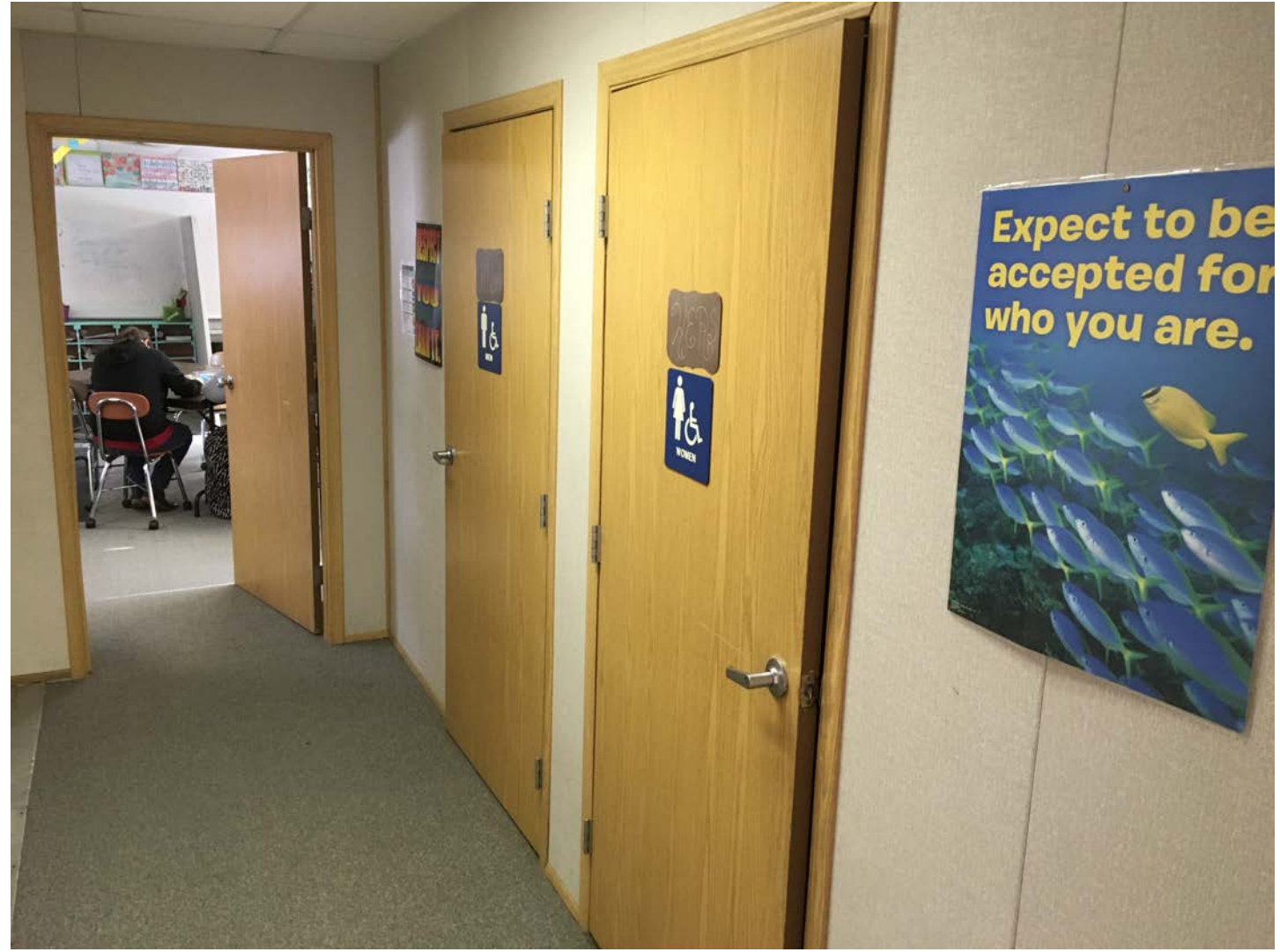
Working Space
for Business
Office and
Patron
Greeting.
319 sq. ft.



Working Office
with small
conference
table for
Superintendent
242 sq. ft.



Restrooms Between Central Office and Classroom Space



Classroom
Space
561 sq. ft.



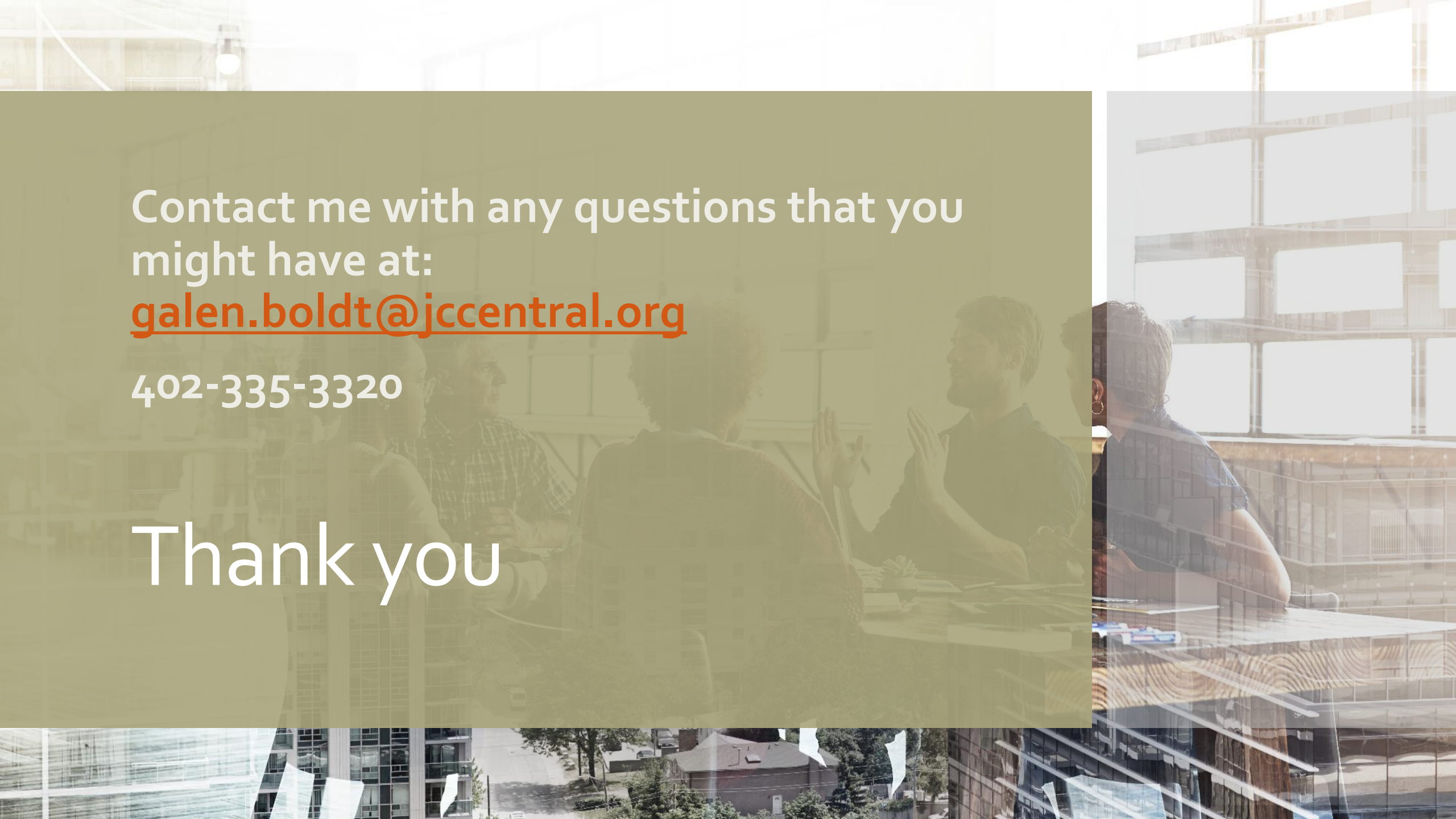
Women's
Restroom fully
functional



Men's
Restroom fully
Functional



This mobile unit has been a valuable part of the Johnson County School's facilities since 2007. As our facility needs have developed over the years, we are looking for other ways to use the space currently available in the High School and Elementary Building for the Central Office and Special Education Classrooms. We would like to use the space between the buildings, where the building currently sits, for more of a multi-use outdoor space including potential playground and greenspace. This building has some minor leakage around the windows, but has fully functioned as our Central Office for 11 years.

The background of the slide is a collage of two images. The top-left portion shows a group of five people sitting around a table in a meeting, with one man gesturing with his hands. The right and bottom portions show a modern building under construction, with a glass facade and a brick structure. A semi-transparent olive-green rectangle is overlaid on the left side of the image, containing the text.

Contact me with any questions that you
might have at:

galen.boldt@jccentral.org

402-335-3320

Thank you